

OKLAHOMA DEPARTMENT OF TRANSPORTATION					
FED. ROAD DIST. NO.	STATE	PROJ. NO.	FISCAL YEAR	SHEET NO.	TOTAL SHEETS
	OKLA.				
DESCRIPTION			REVISIONS	DATE	

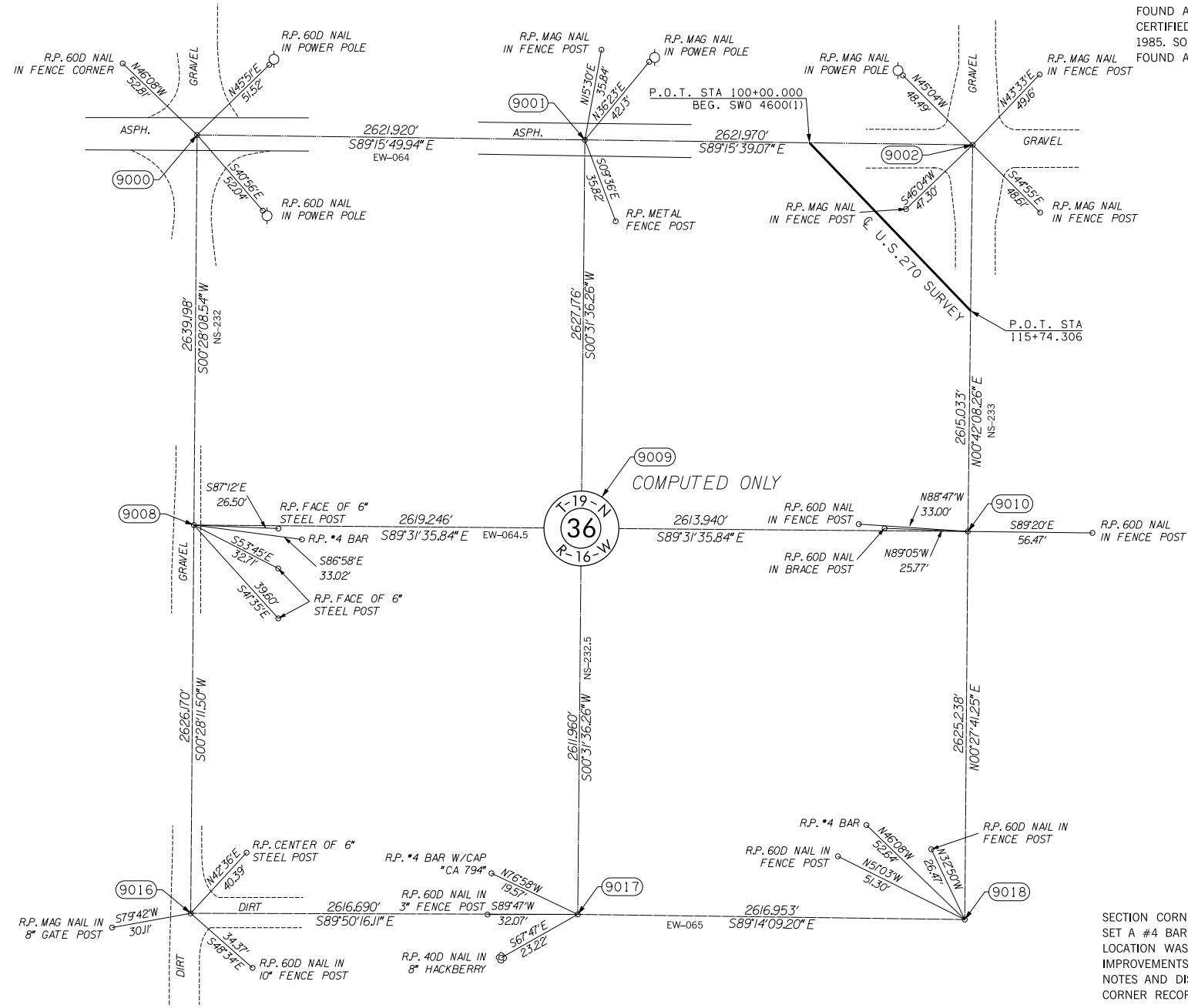
SECTION CORNER - O.D.O.T. D-22-354
 FOUND AND ACCEPTED A P.K. NAIL SET IN ASPHALT PAVEMENT USING OKLAHOMA CERTIFIED CORNER RECORDS FILED IN 2010, 2002, AND 1986. THE REFERENCE MONUMENTS WERE ALSO FOUND AND VERIFIED.

SECTION CORNER - O.D.O.T. D-22-355
 FOUND AND ACCEPTED A RAILROAD SPIKE SET IN ASPHALT PAVEMENT USING OKLAHOMA CERTIFIED CORNER RECORDS FILED IN 2002 AND 1986. SOME OF THE REFERENCE MONUMENTS WERE ALSO FOUND AND VERIFIED.

SECTION CORNER - O.D.O.T. D-22-356
 FOUND AND ACCEPTED A #3 BAR USING OKLAHOMA CERTIFIED CORNER RECORDS FILED IN 2010, 2002, AND 1985. SOME OF THE REFERENCE MONUMENTS WERE ALSO FOUND AND VERIFIED.

SECTION CORNER - O.D.O.T. D-22-460
 FOUND AND ACCEPTED A #4 BAR USING OKLAHOMA CERTIFIED CORNER RECORDS FILED IN 2009 AND 1986. THE REFERENCE MONUMENTS WERE ALSO FOUND AND VERIFIED.

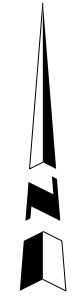
SECTION CORNER - O.D.O.T. D-22-463
 FOUND AND ACCEPTED A #3 BAR. LOCATION IS IN AGREEMENT WITH OKLAHOMA CERTIFIED CORNER RECORD FILED IN 1986. THE REFERENCE MONUMENTS WERE FOUND AND VERIFIED.



SECTION CORNER - O.D.O.T. D-22-461
 SET A #4 BAR WITH "CA 2054" CAP FOR CORNER. RE-ESTABLISHED LOCATION BY USING EXISTING HIGHWAY PLANS AND LOCAL IMPROVEMENTS. LOCATION APPEARS TO BE IN HARMONY WITH SURROUNDING IMPROVEMENTS.

SECTION CORNER - O.D.O.T. D-22-465
 SET A #4 BAR WITH "CA 2054" CAP FOR CORNER. LOCATION WAS RE-ESTABLISHED USING EXISTING IMPROVEMENTS IN THE AREA AND COMPARING TO GLO NOTES AND DISTANCES. NO OKLAHOMA CERTIFIED CORNER RECORD WAS ON FILE FOR THIS LOCATION.

SECTION CORNER - O.D.O.T. D-22-464
 SET A #4 BAR WITH "CA 2054" CAP FOR CORNER. LOCATION WAS RE-ESTABLISHED USING AN EXISTING FENCE LINE RUNNING EAST WEST AND EQUIDISTANT BETWEEN FOUND MONUMENT AT SOUTHWEST CORNER AND EXISTING IMPROVEMENTS AROUND THE SOUTHEAST CORNER. ALSO FOUND A #4 BAR WITH "CA 794" CAP BUT DID NOT ACCEPT BECAUSE IT WAS NOT IN AGREEMENT WITH EXISTING IMPROVEMENTS. NO OKLAHOMA CERTIFIED CORNER RECORDS WERE FILED FOR THIS LOCATION.



SCALE:
 1" = 500'

NOTE: REFERENCE'S SHOWN ARE NOT TO SCALE.

OKLAHOMA DEPARTMENT OF TRANSPORTATION SURVEY DIVISION			
PLS	KH		
DRAWN	CF,SK		
CHECKED	KH		
APPROVED	KH		
CREW	JH,SA,BH,DR	SWO 4600 (1)	PROJECT NO. 17671(34) SHEET NO. S28

SURVEY DATA SHEET